



TEXO TALK

MARCH 2022



TEXO TALK

MARCH

TEXO is all about collaborating and working together, to deliver results across projects and sectors. Our team are strong and united, and TEXO is a brand that can be trusted to deliver. TEXO is much more than a service company – it is a partner, an innovator and a leader.

One of TEXO's defining features is its ability to offer a multi-disciplinary service to clients. Our ability to manage a variety of critical services means companies only need to use one supplier and can be completely confident in our ability to deliver.

Our seven dedicated services, each with their own area of expertise and teams of talented and experienced people, collaborate on complex projects, from precision surveying and pioneering design to on-the-ground construction, large-scale fabrication and asset management.



ENGINEERING
& FABRICATION

Our Engineering & Fabrication service is an established and credible brownfield EPC contractor offering a multi-discipline design, engineering, project management and consultancy service, as well as fully comprehensive construction capabilities in support of projects of all shapes and sizes.



WORKSPACE
SOLUTIONS

Our experienced team can design, survey, manufacture, install, fit-out and provide building support for both permanent and temporary accommodation, across all sectors including land-based, marine and offshore modular accommodation.



ASSET
INTEGRITY

We offer a one-stop solution for asset inspection, repair and maintenance, deploying multi-disciplinary teams to minimise time spent in high-risk environments. Utilising dedicated resources and state of the art technologies, we provide a seamless project management and integrity solution.



SURVEY &
INSPECTION (DSI)

We blend the very best of traditional surveying and inspection expertise and experience with state-of-the-art technology and advanced CAA permissions, allowing us to survey and inspect onshore and offshore sites that no other organisation can reach.



PORT
SERVICES

We provide first-class facilities, experience and support at the Port of Blyth, working with a wide range of onshore and offshore clients to deliver complex projects. We offer bespoke services for a variety of needs including heavy lifting, mobilisation, storage, and logistical freight services.



RECRUITMENT

TEXO Recruitment is an independent recruitment firm providing streamlined and strategic 360 recruitment. Our global reach and local focus – combined with our expertise across key industries – is what enables us to find the best talent for our clients, and the best roles for our candidates.



LIVESTREAM

We can transform projects with our leading-edge technology, providing a real-time remote camera stream that offers fast visual inspection – improving safety in remote and hazardous areas, increasing training opportunities and reducing the need to travel to sites.



Why are we still risking surveyors on the highways?

Jonathan McDaid, Head of Survey
– TEXO Survey & Inspection (DSI)

Traditional highway surveys are expensive and risky. Safety of both the workforce and the public is priority number one when it comes to the planning and design of highway surveys, and in most cases, significant traffic management has to be established – during the day or overnight – to allow surveyors to capture the data required. In some cases, the costs of putting in traffic management and safety measures are more than the cost of the survey itself.

Many contractors are now looking for ways to reduce the risk to their workforce and reduce the costs to the project without compromising the quality of the data. And so they are increasingly turning to mobile mapping services like those delivered by TEXO.

Introducing mobile mapping on highways

In fact, mobile mapping isn't a particularly new technology. Survey companies like TEXO have been conducting mobile mapping surveys for highway surveys for many years. Mobile mapping can involve the collection of geospatial data using a variety of sensors from a variety of modes such as cars, boats and even trains. In its most accurate form however, this involves a LiDAR sensor – either mounted on a vehicle, or attached to an unmanned aerial vehicle (UAV) which is flown over the target area - something we specialise in.

Mobile mapping delivers a range of important commercial benefits to projects at all levels and our clients often reference the following:

Reduced costs – by reducing and sometimes even removing the need for complex traffic management, mobile mapping delivers a much more cost-effective survey option, especially for long stretches of highway.

Improved health and safety – by significantly reducing the need for personnel on the highway – from the surveyors themselves to the teams that manage traffic restrictions – mobile mapping contributes to better project safety results.

Precise data capture – mobile LiDAR mapping offers outstanding data quality, and billions of data points can be captured and subsequently modelled in the way that suits the contractor best – 2D, 3D and interactive – allowing for better decision making and faster project progress. At TEXO, this data is made available through our collaborative portal, Texzone, where multiple teams can access and interrogate the data quickly and seamlessly.

Continued >>>

TEXO TALK

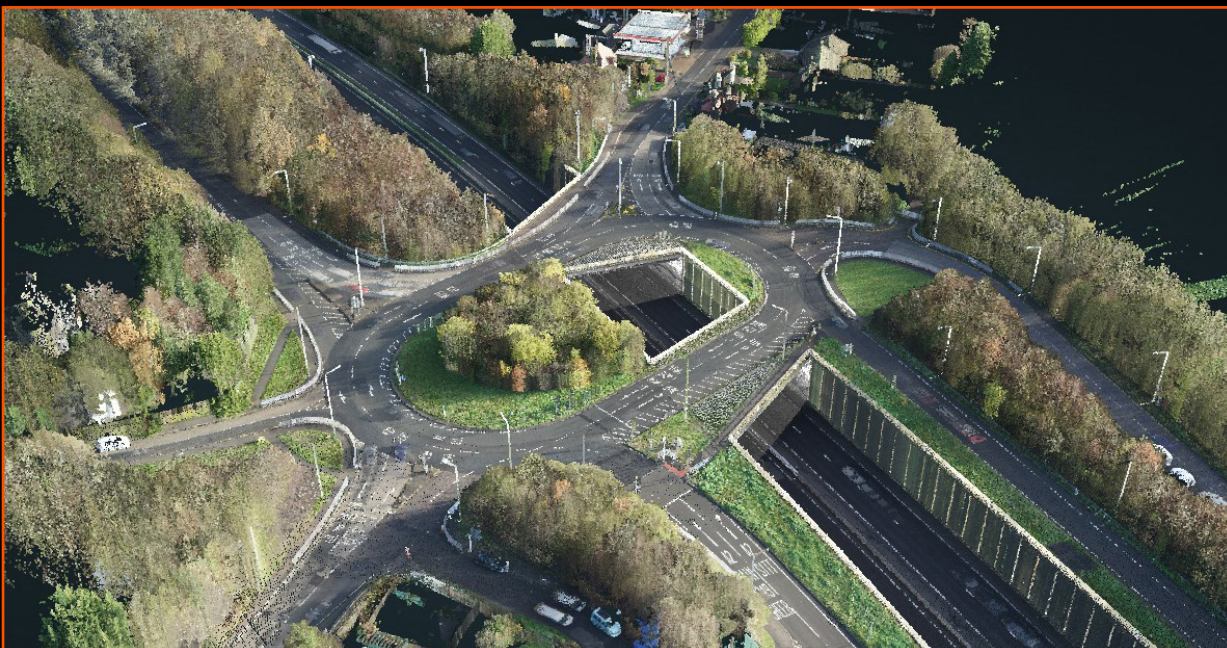
Reduced carbon emissions – by not disrupting the efficient flow of traffic on the highway, and by significantly reducing the number of workforce vehicles needed on the road to complete a traditional survey, contractors can measurably reduce the carbon emissions associated with their project – now something that’s often an outcome target on many highways projects.

“The beauty of mobile mapping is that we can carry it out at any time to suit the client,” says Jonathan McDaid, Head of Survey at TEXO. *“The vehicle-mounted LiDAR can be used in normal traffic conditions, driving at road speed where necessary, and still capture high quality data. Where a UAV solution is required, we can plan that outside of heavy traffic hours and our highly-trained pilots can fly accurately and safely at any time of day or night with a flight plan that is tailored to a clients brief.”*

Mobile mapping in action

TEXO was asked to help with the details survey of a 50-acre disused quarry site in Kent, on behalf of developers. With steep embankments and a busy road network surrounding it, the client needed mobile mapping to collect key data safely without having to put its workforce in a potentially dangerous situation.

Vehicle mobile mapping – using our industry leading LiDAR system, we successfully mapped the live roadways within and bordering the site, with no need for costly traffic management. Ground control was installed safely on the footpaths to verify the LiDAR data. This brought a huge benefit for our client in terms of safety and efficiency.



TEXO TALK

UAV mobile mapping – by deploying our UAV LiDAR system, we guaranteed accurate ground surface levels through even the densest vegetation. This enabled a detailed ground surface model, and contour plot to be developed. It also reduced the time on site and potential safety issues by capturing data in ‘live’ construction areas.

Contractors can choose to use this survey method for a variety of highway-related projects, including carriageway, bridge repairs and embankments, as well as the land around the current network, which is particularly important for road extension or widening schemes, as well as for planned developments alongside existing highways.



“This type of survey is popular with our clients for obvious reasons,” says Jonathan. *“We can show them that they don’t need to put boots on the ground, and that we can significantly reduce the time it takes to produce quality survey data. For some projects, a traditional approach can take several months, but using mobile mapping brings it down to just two or three days – that represents an exceptional saving in cost and time, and we know how important that is to contractors who are running on tight budgets and timescales.”*

“Of course,” adds Jonathan, *“there will always be a need for people to be on the highway. Often, we will need confirmation of something that’s come up on a survey. For example, is the chamber that we have mapped from LiDAR data we surveyed a gas chamber or a telecoms chamber? Or an object that has been obscured from the view of the scanner? The difference is that surveyors can be deployed strategically to the areas in question, rather than taking the time and expense of shutting large parts of roadway down. So mobile mapping takes away a significant portion of the risk on these projects – clients can do a safe, cost-effective initial survey that captures highly accurate geospatial data and plan for a workforce presence on the highway in specific areas or to confirm and enhance essential details.”*

To find out more about how we can deliver a mobile mapping survey for your highways project, contact us today: info@texo.co.uk

Watch your Workspace

TEXO Workspace Solutions has recently integrated technology from TEXO Livestream for project managers and supervisors to be supported in live autonomous communications with our project engineers and clients alike.

As our client base takes us far and wide, both on and offshore, communication is paramount. From POB restraints offshore, site access restrictions onshore and our commitment to reducing our carbon footprint, we had to find a real alternative in communicating and sharing information. TEXO Livestream delivers that very solution and provides us with real-time access to what is going on no matter where we are operating.

From site survey, scope delivery, inspection and handover, we can monitor, control and share everything live from the workplace. The ability to have live communication benefits our team on-site, and whether it be a situation that needs to be supported by our own team, vendor or the client, we can share with pinpoint accuracy any given situation to gain the best resolve.



WORKSPACE
SOLUTIONS



LIVESTREAM



This fits exactly with our core beliefs in clarity and communication and provides a high degree of comfort for our team. The potential uses for Livestream are endless and we continue to develop that potential further every time we bring it to a project. The restrictions we face can now be covered easily and the comfort factor that we can bring to our clients is unlimited. Direct access for key individuals and being able to support any given situation no matter where in the world you are is a game-changer.

– **Richard Lamb**,
TEXO Workspace Solutions Divisional Director



We are pleased to support TEXO Workspace Solutions integrate the Livestream solution as part of everyday workflow processes. Adoption of the solution will deliver value in supporting external workforces, improved HSE practices, combined with the ability to keep clients informed on work schedule, improved communications, and the ability to highlight/share with the client any issues that may arise during the life of the project.

– **Colin McHardy**
TEXO Livestream Commercial Director

TEXO TEAM PLAYER OF THE MONTH



Matthew Street

Junior UAS Pilot



Since the start of 2022 Matthew has gone from strength to strength going from being a second man to leading teams across multiple different job scopes. His work rate and professionalism are second to none and underpins any task he is given which is always completed to the highest of standard.

During the month of March he has completed various utility projects, undertaking different inspection types. These jobs were both finished well within the timeframe allowed and above client expectations which has led to further orders coming in."

– Robert Heaver
Head of Operations DSI



Opening Ceremony of TEXO Station at Blyth SEN School

TEXO were delighted to attend the Opening Ceremony of the specially constructed station platform at The Dale Specialist School in Blyth on 30th March.

TEXO Foundation were really pleased to support this project, providing the design, construction and installation of the entire platform, which will provide access to the former Pacer train that is being converted into a library.

Alan Conway, Divisional Director for TEXO Port Services unveiled the new station, alongside Blyth Town Council deputy mayor John Potts. The school children also performed a song before the official opening, which they had written with professional songwriter, Sam Slatcher, from Citizen songwriters.

The train will be used as a 'Reading Together Library' to help engage children with reading. The Dales School is looking for additional funding to develop a Railway course to help children develop career aspirations linked to the railway and local businesses, using a train driving simulator as a way to make learning engaging and fun. The train will be used to teach independent train travel, as well as railway safety course led by Network Rail. This will be particularly important when the new Northumberland line is opened in 2024.



When we learned about this wonderful project, we immediately realised that it was something for the TEXO Foundation to look at supporting. We are extremely proud to be involved in such community projects, and hope that by taking this project from concept to delivery, we are able to positively affect the lives of others in our local area. I hope this unique library is enjoyed by many for years to come."

– Alan Conway

TEXO Port Services Divisional Director



The Dales Train JustGiving page -

www.justgiving.com/crowdfunding/thedales-school

TEXO TALK

Doing What We Can

TEXO were called in to support the ever increasing supply of much needed humanitarian aid being collated and distributed to support the devastating effects of the war in Ukraine.

The overwhelming volume of packages received from toiletries to sleeping bags has been co-ordinated by the OWN Woman Aid For Ukraine Group, who have undertaken this mammoth task with a team of dedicated volunteers in a bid to ensure that even the most basic of requirements get to where they need to be.

Our warehouse team along with our transport partner Colin Lawson have been only too pleased to do all we can, and will continue these efforts as we plan the next journey through to Poland in the coming weeks.



At TEXO we firmly believe we have a duty to give back and do what we can for the less fortunate and TEXO Foundation stepped up to yet another challenge."

– **Richard Lamb**, Divisional Director
TEXO Workspace Solutions



TEXO TALK

Success in Newcastle for Tommy Hodgson

Well done to Tommy Hodgson who went 5-0 this month with a win against Rustem Fatkhullin. This was the first time boxing in his native Tyneside for undefeated Hodgson, to a sellout crowd at the Hilton Newcastle Gateshead.



Once again, another great performance from Tommy as he was faced with yet another tough test in Rustem Fatkhullin from Russia, a very well schooled and experienced opponent who can give the most seasoned fighter trouble.

This is the sort of fight that will be crucial for Tommy's development, and one which he came through with flying colours in front of his home crowd in a packed North East venue."

– **Jamie Sheldon**, Managing Director
One Empire Management



TEXO TALK

13th professional victory for Dean Sutherland

Well done to Dean Sutherland who defended his WBC International silver welterweight title with a points victory over Corey McCulloch, further extending his unbeaten record. Dean will be back at the Beach Ballroom, Aberdeen in June to defend his international title.



I want to keep pushing up the WBC rankings as well as the British. I want to push myself into contention for a British title fight before the end of the year. This year I'm hoping to really force the issue with some good international fights, and hopefully get a big domestic fight as well."

– Dean Sutherland





ENGINEERING
& FABRICATION



LIVESTREAM



WORKSPACE
SOLUTIONS



RECRUITMENT



ASSET
INTEGRITY

TEXO

TOGETHER WE ARE ONE



PORT
SERVICES



SURVEY &
INSPECTION (DSI)